

Pharmacy Refrigerator



HYC-509/509F/509T/509TF

Scope of Application :

This product is designed to store biological drugs and articles which need to be stored under the temperature of 2-8°C for pharmacies, pharmaceutical factories, epidemic prevention centers, health centers and hospitals as key examples.

Innovative Design

- ◎ Multiple Features for Sample Security and Protection
- ◎ Precise Temperature Control and Reliable Operation
- ◎ Intelligent and Interactive Touchscreen Control
- ◎ Secure Access and Authorized Management
- ◎ Environmentally Friendly Refrigeration
- ◎ Data Storage

Product Features



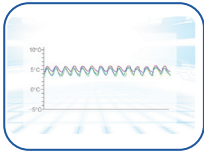
Secure Access and Authorized Management

- NFC authority system works with a magnetic lock system to ensure product safety. In addition, access to unit and stored products is traceable
- Finger print module is optional for additional safety



Data Storage

Standard USB, optional printer, capable of storing 10 years' temperature data, historical data can be checked and traced



Precise Temperature Control and Reliable Operation

- Advanced control system
- Six sensors
- High efficiency air flow system
- Precise temperature control
- Uniform temperature distribution
- VFD driven compressor
- High-efficiency fan motor



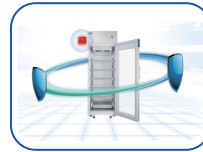
Intelligent and Interactive Touchscreen Control

An intelligent, high definition touch screen control system, allows users to view temperature graphs, operation status, events and alarm records



Environmentally Friendly Refrigeration

R600a Hydrocarbon refrigeration system does not have any negative impacts of the ozone layer, with zero global warming effect

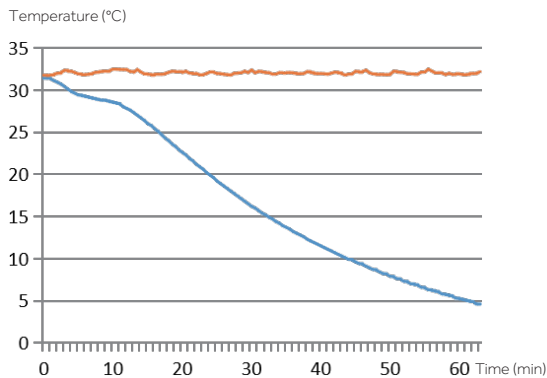


Multiple Features for Sample Security And Protection

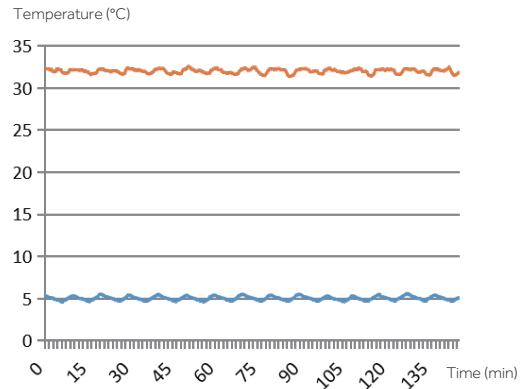
- Audible buzzer and visual flashing lights for alarm system as standard
- Alarm system includes door ajar, high / low temperature, sensor error, low battery, power failure and dirty condenser
- Remote alarm contact terminals as standard
- Supplied with mechanical lock as standard, magnetic lock as optional for added product safety

Temperature Curve

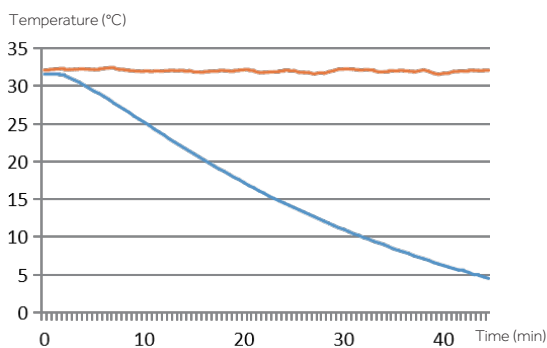
HYC-509/509T Cool Down Curve



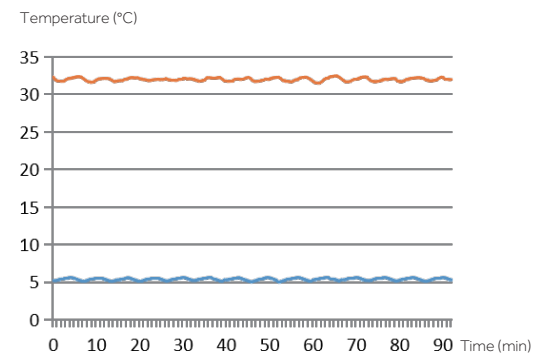
HYC-509/509T Running Temperature Curve



HYC-509F/509TF Cool Down Curve

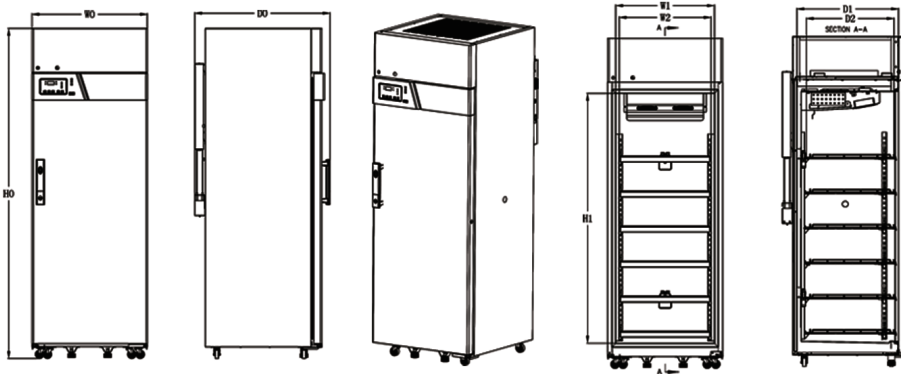


HYC-509F/509TF Running Temperature Curve



— Internal Temperature
— Ambient Temperature

Product Size Drawing



Remark
 W0-Total Width
 W1-Inner Liner Width
 W2-Width of Inner Shelf
 D0-Total Depth
 D1-Inner Liner Depth
 D2-Depth of Inner Shelf
 H0-Total Height
 H1-Inner Liner Height

Code	Model	W0	W1	W2	H0	H1	D0	D1	D2
	HYC-509/509F	693mm	593mm	552mm	1981mm	1500mm	813mm	585mm	495mm
	HYC-509T/509TF	693mm	593mm	552mm	1981mm	1500mm	813mm	585mm	495mm

Specifications



Model		HYC-509	HYC-509F	HYC-509T	HYC-509TF	
Technical Data	Cabinet Type	Upright, single glass door	Upright, single solid door	Upright, single glass door	Upright, single solid door	
	Climate Class	N	N	N	N	
	Cooling Type	Forced air cooling	Forced air cooling	Forced air cooling	Forced air cooling	
	Defrost Mode	Auto	Auto	Auto	Auto	
	Refrigerant	HC	HC	HC	HC	
	Sound Level (dB(A))	40	40	40	40	
Performance	Temperature Range (°C)	2-8	2-8	2-8	2-8	
Control	Controller	Microprocessor	Microprocessor	Microprocessor	Microprocessor	
	Display	LED	LED	Touchscreen+LED	Touchscreen+LED	
Electrical Data	Power Supply (V/Hz)	220-240/50/60	220-240/50/60	220-240/50/60	220-240/50/60	
	Power (W)	370	315	370	315	
	Electrical Current (A)	1.85	1.75	1.85	1.75	
	Power Consumption (kWh/24h)	5.9	5.3	5.9	5.3	
Construction	Capacity (L/Cu.Ft)	509/17.97	509/17.97	509/17.97	509/17.97	
	Net/Gross Weight (approx)	kg	180/215	175/210	180/215	175/210
		lbs	396/473	385/462	396/473	385/462
	Interior Dimensions (W*D*H)	mm	593*585*1500	593*585*1500	593*585*1500	593*585*1500
		in	23.21*22.9*58.8	23.21*22.9*58.8	23.21*22.9*58.8	23.21*22.9*58.8
	Exterior Dimensions (W*D*H)	mm	693*813*1981	693*813*1981	693*813*1981	693*813*1981
		in	27.1*31.9*77.7	27.1*31.9*77.7	27.1*31.9*77.7	27.1*31.9*77.7
Packing Dimensions (W*D*H)	mm	800*875*2100	800*875*2100	800*875*2100	800*875*2100	
	in	31.3*34.3*82.3	31.3*34.3*82.3	31.3*34.3*82.3	31.3*34.3*82.3	
Loading Quantities	Container Load (20'/40'/40'H)	14/28/28	14/28/28	14/28/28	14/28/28	
Functions	High/Low Temperature	Y	Y	Y	Y	
	Power Failure	Y	Y	Y	Y	
	Sensor Error	Y	Y	Y	Y	
	Low Battery	Y	Y	Y	Y	
	Door Ajar	Y	Y	Y	Y	
	Caster	Y	Y	Y	Y	
Accessories	Foot	Y	Y	Y	Y	
	Porthole	Y	Y	Y	Y	
	Shelves/Drawers	Y/Optional	Y/Optional	Y/Optional	Y/Optional	
	USB Interface	Y	Y	Y	Y	
	Remote Alarm	Y	Y	Y	Y	
	Certification	CE	Y	Y	Y	Y

*Haier Biomedical reserves the right to change products and specifications without prior notice.



WolfLabs

Pricing on any accessories shown can be found by keying the part number into the search box on our website.

The specifications listed in this brochure are subject to change by the manufacturer and therefore cannot be guaranteed to be correct. If there are aspects of the specification that must be guaranteed, please provide these to our sales team so that details can be confirmed.

www.wolflabs.co.uk

Tel : 01759 301142

Fax : 01759 301143

sales@wolflabs.co.uk

Please contact us if this literature doesn't answer all your questions.